

PRO III™

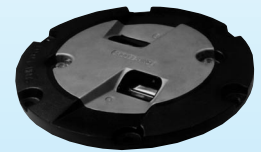
COOPER Crouse-Hinds
AIRPORT LIGHTING PRODUCTS

RCL/TDZ



Runway Centerline Light or Touchdown Zone Light

Compliances: FAA AC 150/5345-46B: L-850A; L-850B
ICAO Annex 14: Fig. 2.5 and 2.7
USAF Regulation AFM 32-1076: Fig. 4.9B and 4.11
USN NAVAIR 51-50AAA-2: Fig. 4B and 4
Transport Canada Specification K 271: Fig B5 and B8



RCL / TDZ

L
8
5
0

Applications

The RCL/TDZ light does double duty as a runway centerline light and touchdown zone light. The RCL is a bidirectional light, typically clear/clear or clear/red, with two 48 W lamps. The TDZ is a clear unidirectional light, with a 48 W lamp. RCL /TDZ may be used for any category FAA, ICAO, or military runway.

Features



- ETL Certified
- Low Profile, < .25" (6mm) – FAA Style 3
- Unique combination of high-strength aluminum optical assembly and ductile iron outer ring for Snow Plow Protection
- Low Power Consumption
- Few Parts to Stock
- Beam Orientation can be easily changed to left or right toe-in
- Easy to maintain – no sealant required for prism or feed-through assembly replacement
- Pressure test plug for seal integrity verification
- Long Lamp Life – Quartz Halogen, 48 W

Ordering Information

8	5	0		3	-			-				-		
---	---	---	--	---	---	--	--	---	--	--	--	---	--	--

FAA Type: _____

Fixture Type: _____

- A = Runway centerline light
- B = Touchdown zone light

Color Filters: _____

- CC = Clear/Clear (L-850A)
- CR = Clear/Red (L-850A)
- C = Clear (L-850B)

Fixture Diameter: _____

- 12F = Optical assembly with 12" FAA support ring
- NSR = Optical assembly without support ring

L-823 Plug Connection: _____

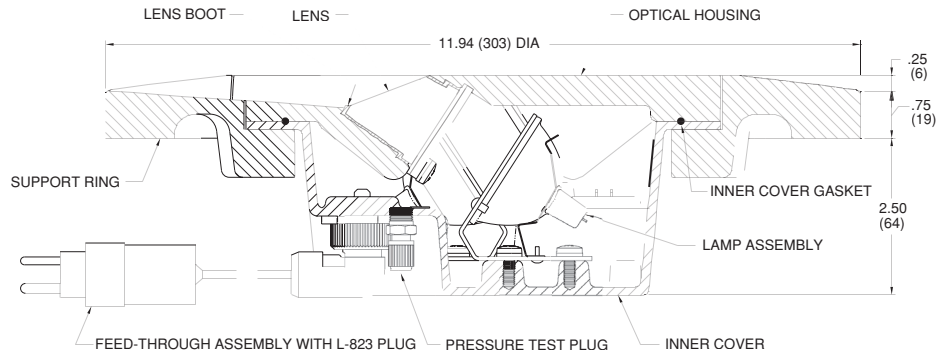
- P1 = One plug
- P2 = Two plugs (L-850A only)

Beam Orientation (L-850B only): _____

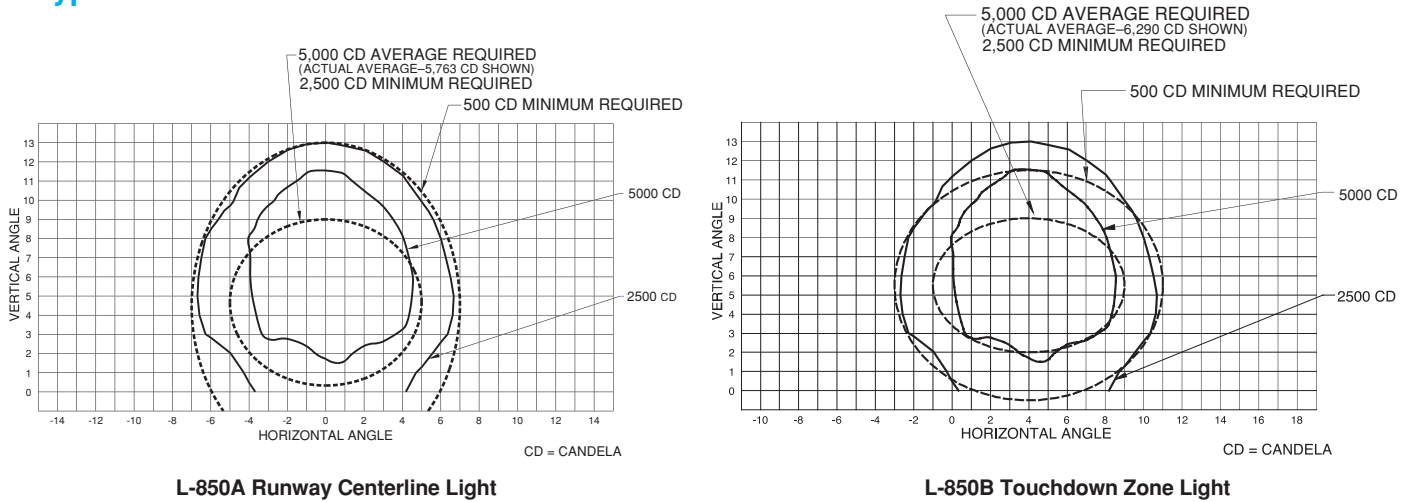
- L = Left Toe-in
- R = Right Toe-in
- S = Straight

Outline Drawings:

Dimensions: Inches (Millimeters)	
Instruction Manual:	9913
Shipping Weight:	23.0 lbs 10.4 kg
Shipping Volume:	0.7 cu ft 0.02 m ³



Typical Photometric Data:



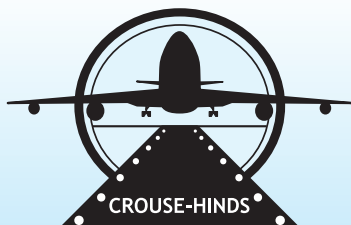
Accessories

Catalog Number	Item Description	Catalog Number	Item Description
AC24242H200003	Base: L-868B, Class I, 24" Deep	823KP-D4-D4	Connector Kit – L-823, 8 AWG, .32" to .43" O.D.
33001	Isolation Transformer – 45 W, 6.6/6.6 A	10047-2154	Heat Shrink Kit – 1 Piece
33004	Isolation Transformer – 100 W, 6.6/6.6 A	10047-1425	Heat Shrink Kit – 2 Piece
33005	Isolation Transformer – 100 W, 20/6.6 A		

Renewal Parts

Part Number	Description	Part Number	Description
21116	Lamp – 48 W, 6.6 A	21121	Feed-through Assembly – 2 Lamp, 1 Connector
21126-C*	Lens Replacement Kit – Clear	21122	Feed-through Assembly – 1 Lamp, 1 Connector
21126-R**	Lens Replacement Kit – Red	10048-25	Gasket Lubricant – 5.3 oz Container
21124	Gasket – Bottom Cover	850X3-XX-NSR-XXX	Spare Optical Assembly (See page AT-2.1F)

* Includes 21102-C lens, 21103 lens boot, 21101 lens retaining gasket and gasket lubricant.
 ** Includes 21102-R lens, 21103 lens boot, 21101 lens retaining gasket and gasket lubricant.



For more information

**CROUSE-HINDS
AIRPORT LIGHTING PRODUCTS**
 1200 Kennedy Road
 Windsor, CT 06095
 USA
 TEL: (860) 683-4300
 FAX: (860) 683-4354
 WEBSITE: www.chalp.com

**CROUSE-HINDS
AIRPORT LIGHTING PRODUCTS**
 5925 McLaughlin Road
 Mississauga, Ontario
 CANADA L5R 1B8
 TEL: (905) 507-4187
 FAX: (800) 263-9504